

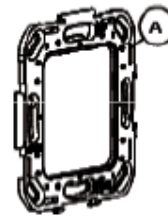
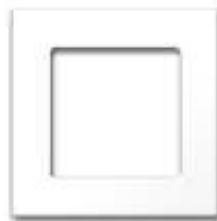
24/05/18

DOC148535 TDST Smoove Origin RS100 io

Designation	Smoove Origin RS100 io
Reference	1811716 / 1811717 / 1811718 / 1811719 / 1811720 / 1811721 / 1811722
Range	Smoove Origin io Homecontrol

FUNCTIONS

- 1w control
- Command: Up, My, Down
- Speed management by ergonomic
- Setting with io ergonomic
- Adaptation with Standard (49075) DIN 50x50
- Composition: 1 Module, 1 frame & 1 Mounting plate



TECHNICAL SPECIFICATIONS

Box	Material Color	ABS & PC Pure
	Size	Module 50 x 50 x 10 mm Frame 80 x 80 x 10 mm
	Protection factor against solid & splashproof	IP 30
Battery	Voltage Type Number	3V CR 2430 x1
Battery lifetime (at ambient temperature in typical conditions)		60 months
Radio frequency EIRP (Equivalent Iso tropically Radiated Power) Modulation Type		868.95MHz -6 dBm or 0.25mW FSK dev. ± 19.2 kHz
Protocol Antenna		io homecontrol 1 Way Integrated
Temperature range	Storing Working	-20°C / +60°C 0°C / +48°C
Drop test		Installation: at 0°C 1/face (height: 1,2m) Using: at 20°C 1/face (height: 1,2m)
Wear resistivity Cleaning products resistivity		50 250 cycles
Weight Standard (CE)		24g

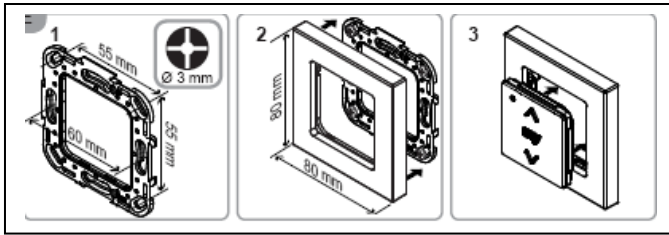
Safety of the user: EN EN60950-1 : 2006

Health of the use: EN50371 : 2002

Electromagnetic compatibility: EN61000-6-1: 2007_EN61000-6-3 : 2007_EN301 489-3 V1.4.1 : 2002_EN301 489-1 V1.8.1 : 2008

Radio Spectrum : EN300220-2 V2.1.2 : 2007_EN300220-1 V2.1.1 : 2006

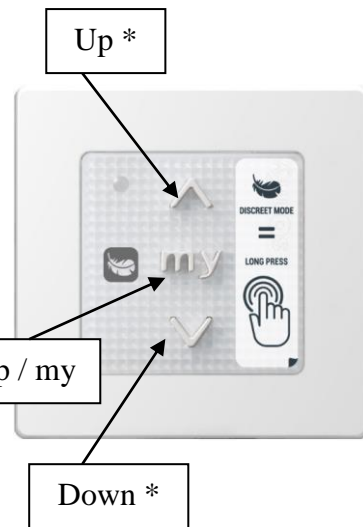
DESCRIPTION



Green cover for io technology

Battery

Prog



* Speed



DISCREET MODE



LONG PRESS



COMPATIBILITIES

Actuators:

- S&So io actuators
- S&So hybrid io actuators

BE – R&D

QUALITY

MARKETING